

PLAN NOTES:

1. CONTRACTOR / STUD MANUFACTURER SHALL RETAIN THE SERVICES OF AN ENGINEER TO DESIGN STUDS FOR LOADS (DEAD, LIVE, WIND). MINIMUM WIND LOAD SHALL BE 10 PSF AND A L/360 LIVE / WIND LOAD DEFLECTION. SUBMIT SIGNED AND SEALED SUBMITTALS AND CALCULATIONS FOR REVIEW.
2. DESIGN DATA: SUBMIT COPIES OF EACH UL DESIGN SELECTED FOR EACH REQUIRED FIRE RESISTANCE RATING FOR GYPSUM WALL ASSEMBLIES INCLUDING INSTALLER CERTIFICATION THAT EACH UL DESIGN SELECTED WILL PROVIDE THE SCHEDULED FIRE RESISTANCE RATING IN ACCORDANCE WITH LOCAL CODES.

3. SUBMIT CERTIFICATION AND TEST RESULTS THAT CLEARLY STATE AND INDICATE THAT EACH INDIVIDUAL ELEMENT AND COMPONENT OF FIRE RATED GYPSUM WALL ASSEMBLIES ARE APPROVED AND APPROPRIATELY RATED FOR SPECIFIC RATED ASSEMBLY FOR WHICH IT IS TO BE USED, AND THAT THE USE OF SUCH INDIVIDUAL ELEMENT WILL IN NO WAY JEOPARDIZE THE REQUIRED RATING OF THE ASSEMBLY.
4. SUBMIT SHOP DRAWINGS INCLUDING COMPLETE DETAILS INDICATING LOCATION OF ALL CONTROL AND EXPANSION JOINTS IN WALL AND CEILINGS.

WALL TYPES

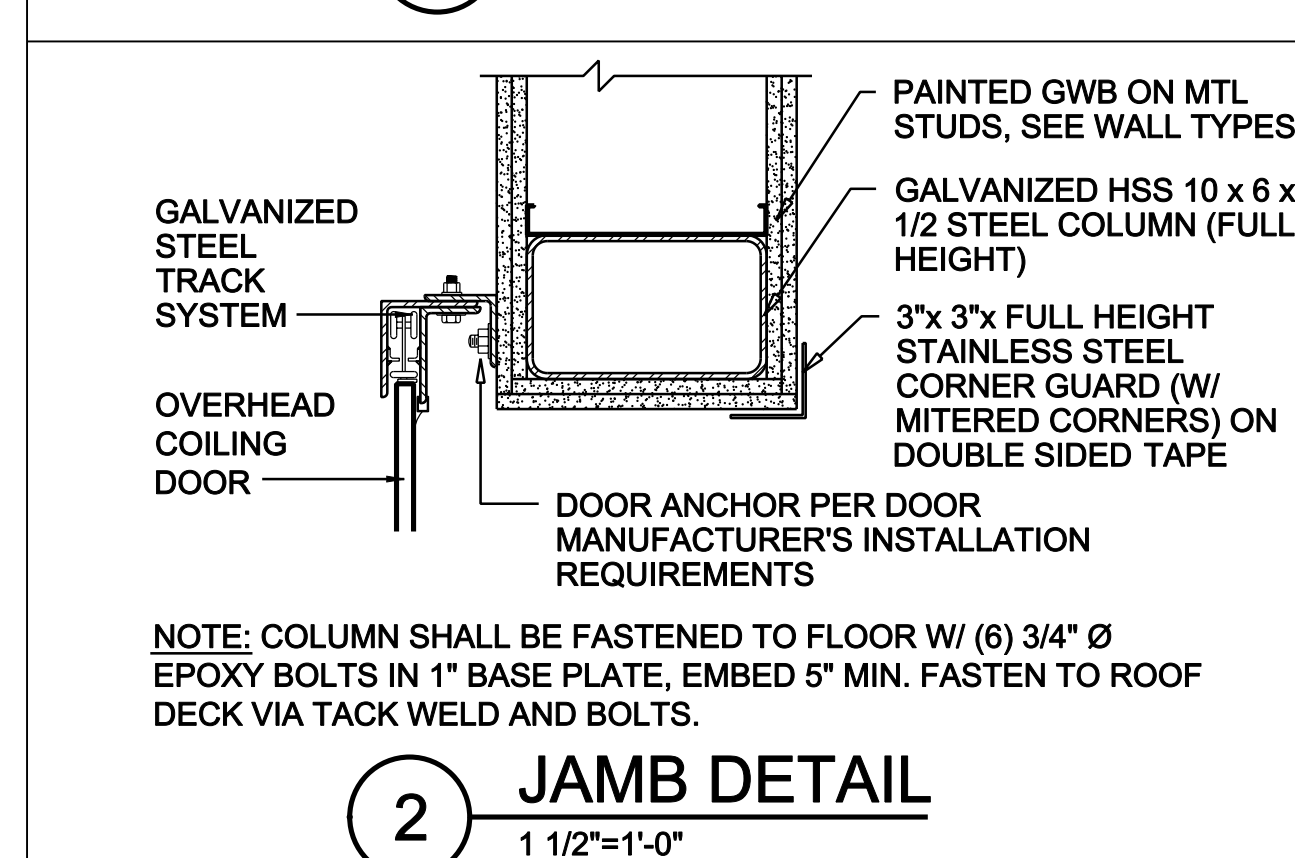
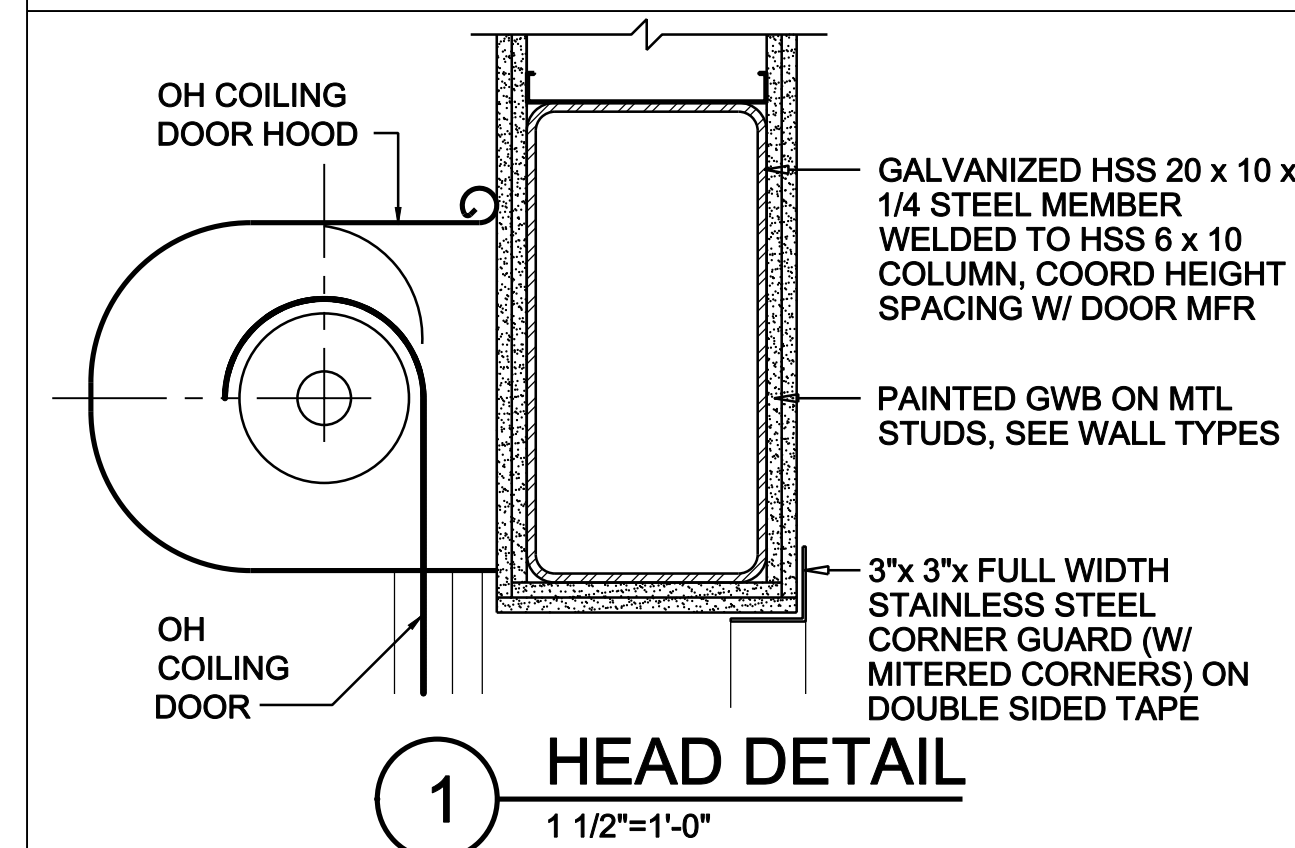
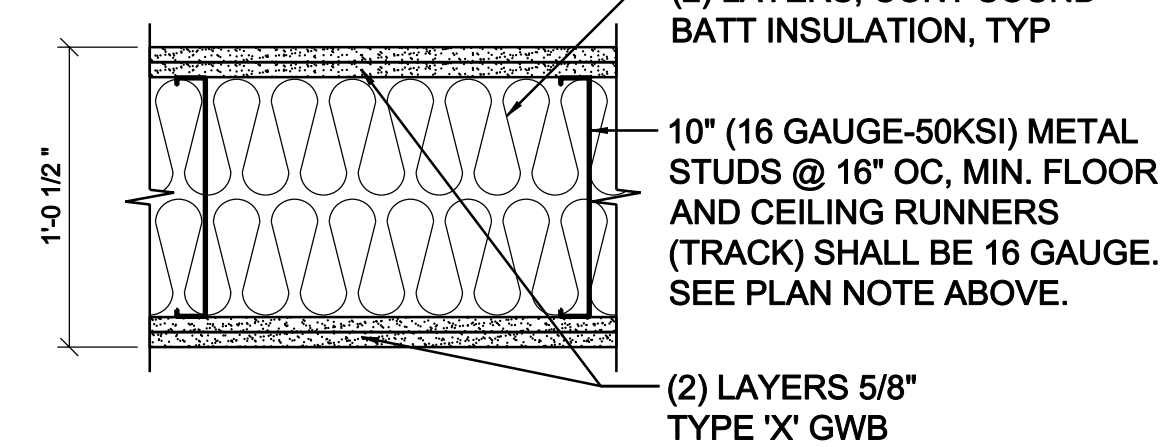
1 1/2" = 1'-0"

GENERAL WALL TYPES NOTES

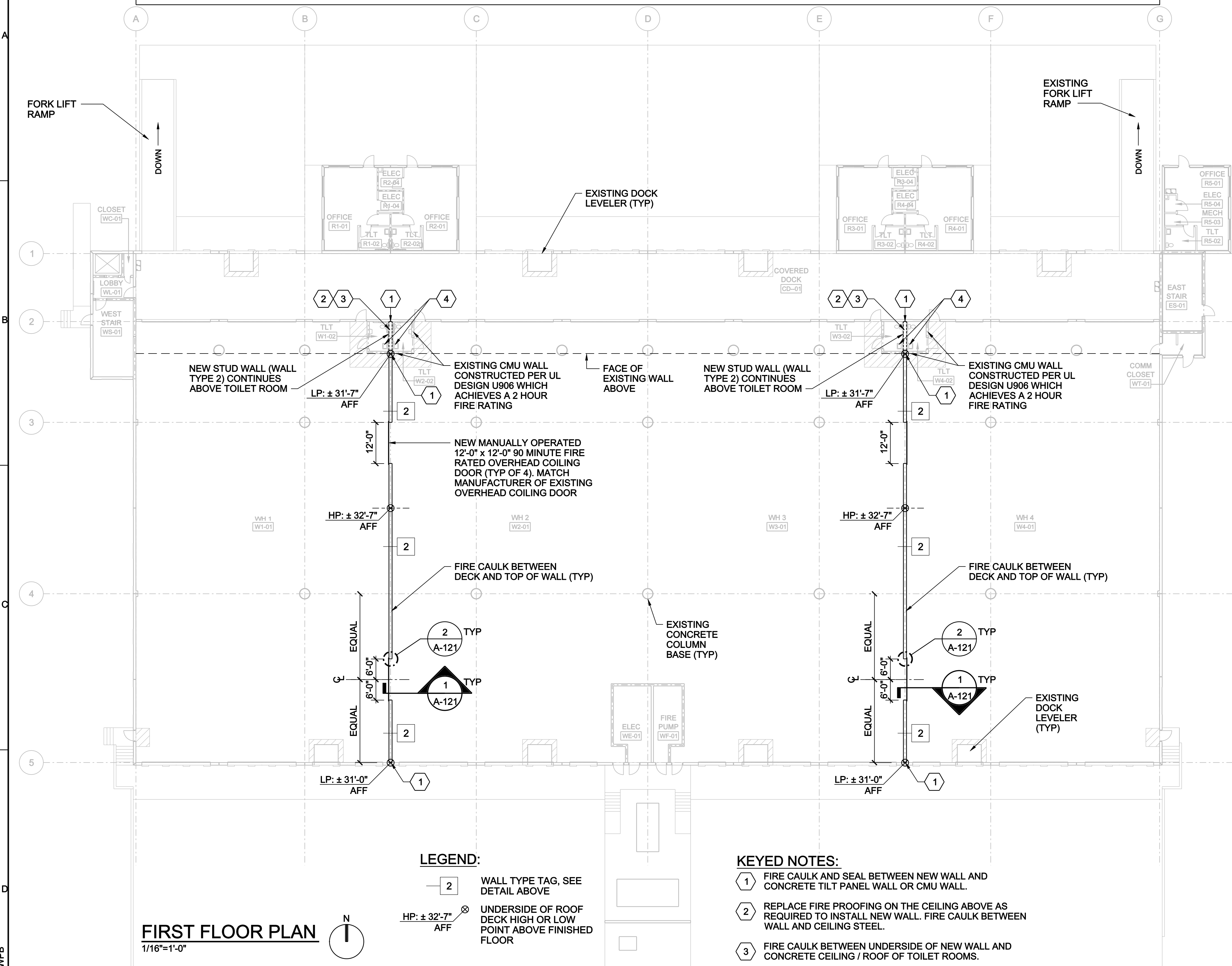
1. ANY BEAMS, JOISTS, OR OTHER STRUCTURAL MEMBERS THAT ALIGN ABOVE A FIRE RATED WALL ASSEMBLY THAT IS INDICATED TO EXTEND TO BOTTOM OF FLOOR OR ROOF DECK SHALL BE FULLY ENCLOSED WITH METAL STUDS AND GWB TO MAINTAIN SAME FIRE RATING AS WALL BELOW.
2. ANY STRUCTURAL MEMBER, CONDUIT, WIRE, PIPE, DUCT, ETC. THAT PENETRATES THE FIRE RATED WALL ASSEMBLY SHALL BE COMPLETELY SEALED IN ACCORDANCE WITH A UL APPROVED "THROUGH PENETRATION FIRE STOP ASSEMBLY" SYSTEM WITH THE SAME RATING AS THE WALL BEING PENETRATED.
3. PROVIDE HORIZONTAL 10" (16 GAUGE) METAL STUD BRACING CHANNELS AT 10'-0" OC.
4. ALL NEW WALLS SHALL BE PAINTED WHITE ON BOTH SIDES.
5. TOP TRACK MAY RUN ON UNDERSIDE OF EXISTING JOIST BUT WALL SECTION MUST RUN TO UNDERSIDE OF DECK, PROVIDE ADDITIONAL STUD FRAMING AS REQUIRED (SEE GENERAL WALL TYPES NOTE 1). ACCOUNT FOR JOIST DEFLECTION IN WALL DESIGN.
6. THE INDICATED SIZES AND SPACING OF STUDS ARE MINIMUM REQUIREMENTS. SPECIALTY ENGINEER'S FINAL DESIGN WILL CONTROL FINISHED PRODUCT. THE MOST STRINGENT OF EITHER THE INDICATED SIZES AND SPACING, OR SPECIALTY ENGINEER'S DESIGN SHALL APPLY.

2HR RATED (UL U419) AND ACOUSTICALLY INSULATED PARTITION WALL

2. ALL PARTITION COMPONENTS EXTEND FROM TOP OF FLOOR TO UNDERSIDE OF ROOF / FLOOR DECK ABOVE, FIRE CAULKED TOP AND BOTTOM. PROVIDE AND INSTALL FIRE SAFING AT TOP OF WALL BETWEEN ROOF / FLOOR DECK FLUTES PER UL REQUIREMENTS TO MAINTAIN 2HR FIRE RATING. PROVIDE FIRE RATED CONTROL JOINTS (VERTICALLY AT 30'-0" ON CENTER MAX AND AT APPROXIMATELY MID HEIGHT HORIZONTALLY). ALIGN JOINTS W/ OVERHEAD DOORS AND COLUMN GRIDS TO THE MAXIMUM EXTENT POSSIBLE. SUBMIT PROPOSED LAYOUT FOR APPROVAL.



NOTE: COLUMN SHALL BE FASTENED TO FLOOR W/ (6) 3/4" Ø EPOXY BOLTS IN 1" BASE PLATE, EMBED 5" MIN. FASTEN TO ROOF DECK VIA TACK WELD AND BOLTS.



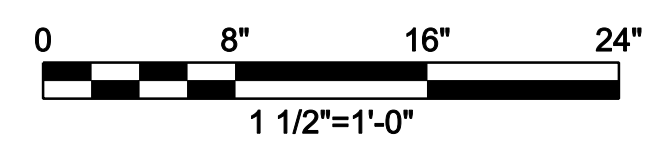
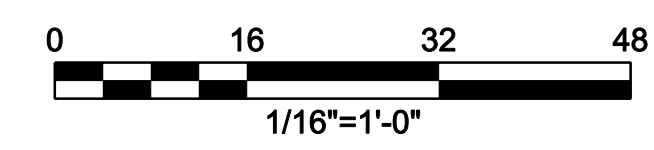
LEGEND:

- 2 WALL TYPE TAG, SEE DETAIL ABOVE
- HP: ± 32'-7" AFF UNDERSIDE OF ROOF DECK HIGH OR LOW POINT ABOVE FINISHED FLOOR

KEYED NOTES:

- 1 FIRE CAULK AND SEAL BETWEEN NEW WALL AND CONCRETE TILT PANEL WALL OR CMU WALL.
- 2 REPLACE FIRE PROOFING ON THE CEILING ABOVE AS REQUIRED TO INSTALL NEW WALL. FIRE CAULK BETWEEN WALL AND CEILING STEEL.
- 3 FIRE CAULK BETWEEN UNDERSIDE OF NEW WALL AND CONCRETE CEILING / ROOF OF TOILET ROOMS.
- 4 RELOCATE TRANSFORMERS AS REQUIRED TO MAINTAIN NEC CLEARANCE BETWEEN WALLS AND TO PERMIT WALL CONSTRUCTION.

FIRST FLOOR PLAN
1/16"=1'-0"



3001 PGA BLVD - SUITE 300 PALM BEACH GARDENS, FL 33410 AAC001992 EB0000072 LC26000188		PORT OF PALM BEACH SOUTH GATE WAREHOUSE TENANT WALLS RIVIERA BEACH, FLORIDA	
CH2MHILL ARCHITECTURE		FIRST FLOOR PLAN AND DETAILS	
NO. DATE	DR	REVISION	CHK
1		1	AW SLOCOMBE
2		2	TC ORLOWSKI
3		3	AW SLOCOMBE
4		4	TC ORLOWSKI
5		5	AW SLOCOMBE
6		6	TC ORLOWSKI
7		7	AW SLOCOMBE
8		8	TC ORLOWSKI
9		9	AW SLOCOMBE
10		10	TC ORLOWSKI
11		11	AW SLOCOMBE
12		12	TC ORLOWSKI
13		13	AW SLOCOMBE
14		14	TC ORLOWSKI
15		15	AW SLOCOMBE
16		16	TC ORLOWSKI
17		17	AW SLOCOMBE
18		18	TC ORLOWSKI
19		19	AW SLOCOMBE
20		20	TC ORLOWSKI
21		21	AW SLOCOMBE
22		22	TC ORLOWSKI
23		23	AW SLOCOMBE
24		24	TC ORLOWSKI
25		25	AW SLOCOMBE
26		26	TC ORLOWSKI
27		27	AW SLOCOMBE
28		28	TC ORLOWSKI
29		29	AW SLOCOMBE
30		30	TC ORLOWSKI
31		31	AW SLOCOMBE
32		32	TC ORLOWSKI
33		33	AW SLOCOMBE
34		34	TC ORLOWSKI
35		35	AW SLOCOMBE
36		36	TC ORLOWSKI
37		37	AW SLOCOMBE
38		38	TC ORLOWSKI
39		39	AW SLOCOMBE
40		40	TC ORLOWSKI
41		41	AW SLOCOMBE
42		42	TC ORLOWSKI
43		43	AW SLOCOMBE
44		44	TC ORLOWSKI
45		45	AW SLOCOMBE
46		46	TC ORLOWSKI
47		47	AW SLOCOMBE
48		48	TC ORLOWSKI
49		49	AW SLOCOMBE
50		50	TC ORLOWSKI
51		51	AW SLOCOMBE
52		52	TC ORLOWSKI
53		53	AW SLOCOMBE
54		54	TC ORLOWSKI
55		55	AW SLOCOMBE
56		56	TC ORLOWSKI
57		57	AW SLOCOMBE
58		58	TC ORLOWSKI
59		59	AW SLOCOMBE
60		60	TC ORLOWSKI
61		61	AW SLOCOMBE
62		62	TC ORLOWSKI
63		63	AW SLOCOMBE
64		64	TC ORLOWSKI
65		65	AW SLOCOMBE
66		66	TC ORLOWSKI
67		67	AW SLOCOMBE
68		68	TC ORLOWSKI
69		69	AW SLOCOMBE
70		70	TC ORLOWSKI
71		71	AW SLOCOMBE
72		72	TC ORLOWSKI
73		73	AW SLOCOMBE
74		74	TC ORLOWSKI
75		75	AW SLOCOMBE
76		76	TC ORLOWSKI
77		77	AW SLOCOMBE
78		78	TC ORLOWSKI
79		79	AW SLOCOMBE
80		80	TC ORLOWSKI
81		81	AW SLOCOMBE
82		82	TC ORLOWSKI
83		83	AW SLOCOMBE
84		84	TC ORLOWSKI
85		85	AW SLOCOMBE
86		86	TC ORLOWSKI
87		87	AW SLOCOMBE
88		88	TC ORLOWSKI
89		89	AW SLOCOMBE
90		90	TC ORLOWSKI
91		91	AW SLOCOMBE
92		92	TC ORLOWSKI
93		93	AW SLOCOMBE
94		94	TC ORLOWSKI
95		95	AW SLOCOMBE
96		96	TC ORLOWSKI
97		97	AW SLOCOMBE
98		98	TC ORLOWSKI
99		99	AW SLOCOMBE
100		100	TC ORLOWSKI